



Blowfish Racing Products
21650 Doral Road
Waukesha, WI 53186
steve@blowfishracing.com
844-398-9632

TOW-10-600R

Next Gen Rear Billet Aluminum Tow Hook Kit, 2005-2014 Mustang - ALL

Congratulations on the purchase of your Blowfish Racing Products Rear Tow Hook Kit! You have chosen a quality, American Made product that has been Engineered for the demands of the racing world with style you'll be proud to show off on the street.

WARNING: Tow Hooks are intended to provide a safe place to tie onto the vehicle for slow speed, short duration, CONTROLLED extractions from off-track situations. Yanking a vehicle from this tow point is not advised and may result in damage. They do not prevent damage to body parts that hit obstacles in an extraction, nor do they prevent damage to drive train components. Improper use may damage body, frame and drive train. Any damage from misuse is the sole responsibility of the customer. THIS PRODUCT IS INTENDED FOR OFF-ROAD USE ONLY AND HAS NOT BEEN EVALUATED BY NHTSA AND MAKES NO CLAIMS TO BE SAFE IN A COLLISION, NOR BE 5MPH CRASH COMPLIANT. Blowfish Racing, LLC is not responsible for damage or bodily harm incurred from an accident on the track or street.

WARRANTY: This product is guaranteed to be manufactured to a high quality standard. If the part or finish fails within 1 year, it can be returned for a new replacement. Shipping costs back to us is the customer's responsibility. Any mis-use of this product will void the warranty.

PROPER EXTRACTION WITH OUR TOW HOOK: Hook or tie onto the Tow Hook with one end of a tow rated chain or strap at least 20ft long. Position the end of the strap or chain out as far as it will go to take up any slack. It must be positioned within 45 degrees of the centerline of the vehicle to prevent damage to the bracket or the vehicle's frame. Hook or tie the other end to the tow vehicle in a place that is safe. The driver of the stranded vehicle must be in the driver seat during extraction to control the steering wheel and brakes. Release the parking brake and put transmission in neutral on the towed vehicle. The tow vehicle must lurch away from the towed vehicle until the strap is taught. Then slowly pull the vehicle to a roll, while the driver of the towed vehicle steers and brakes as needed to keep the strap or chain taught. Only tow until the towed vehicle is in a safe area to park or drive away. DO NOT TOW ANY VEHICLE FOR PROLONGED PERIODS.

Now that we have that out of the way, let's get your Tow Hook and Bracket installed already!

NOTE: Instructions are specific to the bumper covers for 2010-2012 Mustang V6/GT/BOSS. Please consult a shop manual for vehicle specific bumper cover removal and installation instructions.

STEP 1: Preparation

READ THESE DIRECTIONS PRIOR TO THE INSTALLATION!

NOTE: Instructions for removing and reinstalling the bumper cover do not specifically apply to all trim levels. Location, type and quantity of fasteners may vary, depending on trim level, options and aftermarket parts previously installed.

STEP 2: Trunk Trim Panel Removal

Inside the trunk, locate the rear trim panel. Remove the 2 upper threaded plastic retainers (REF 1, RED arrow) by unthreading them by hand. Remove the 2 lower push pins (REF 1, WHITE arrow) using a non-marring pry tool. Lift the panel up by the cargo net hook openings (REF 1, YELLOW arrow) to release the 2 hidden retainer pins (REF 2, BLUE circle). Move the panel forward just enough to locate the trunk light electrical connector (REF 2, WHITE circle). Disconnect the connector from the light by pinching the tab and pulling the connector to release it. Remove the panel from the trunk and set aside.

STEP 3: Taillight Assemblies Removal

Locate the taillight connectors (REF 3, RED Circle). Disconnect the connectors by pinching the tab and pulling the connectors to release them. Locate the harness grommet (REF 3, YELLOW circle) and push the grommet out of the trunk sheet metal hole. Locate the 3 nuts (REF 4, GREEN circles) that retain each taillight assembly from inside the trunk and remove them with an 11mm socket and ratchet. Carefully remove each taillight assembly and set aside.

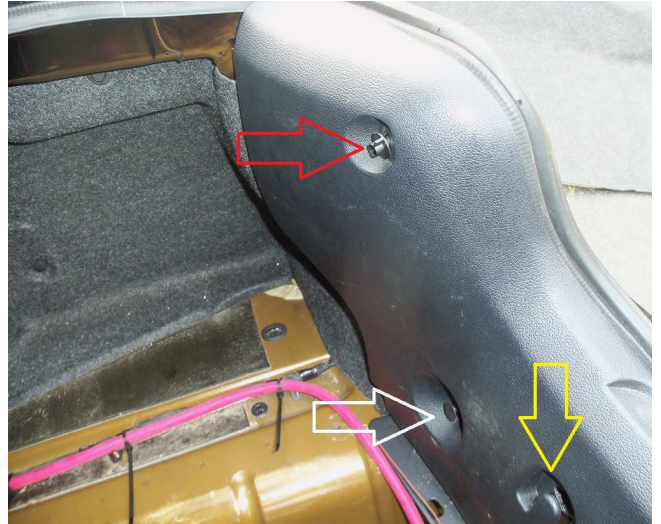
STEP 4: Rear Bumper Lighting Harness Disconnection

Locate the lighting harness that feeds through the trunk sheet metal, to the rear bumper. Similar to the taillights, disconnect the connector (REF 3, LT GREEN circle) and push the grommet out of the hole in the trunk sheet metal.

REF 4 (Driver side shown. Passenger side similar)



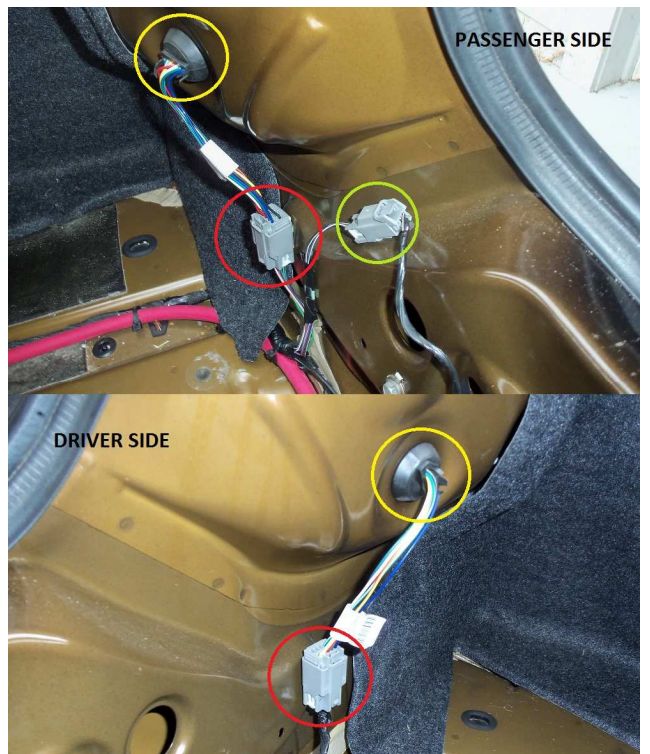
REF 1 (Passenger side shown. Driver side similar)



REF 2



REF 3



STEP 5: Bumper Cover Hardware Removal

Locate 3 per side phillips head screws (REF 5, PINK circles) at the rear lip of the wheel well openings and remove them with the stubby phillips head screw driver. Locate 2 per side push pins (REF 6, BLUE arrows) under the lower fascia lip, behind the rear wheel wells. Pull the center button with a non-marring pry tool to release their grip and remove them. Locate the 2 white push pins (REF 7, ORANGE circles) and use the non-marring pry tool to remove them. They can break easily, so great care must be taken to removed them unharmed. If they break, they can be replaced with simple 3/8" plastic push pins from your local auto parts store or factory replacements (P/N: W790229S900) can be purchased at your local Ford dealer or online. Locate the 2 flaps that go up from the bottom, rear of the lower fascia. Each flap is secured to the body with 1 push pin (REF 8, GREEN arrow). Pull the center button with a non-marring pry tool to release their grip and remove them.

STEP 6: Bumper Cover Removal

Gently pull the bumper cover fender lip out away from the inner fender (REF 5, PURPLE arrow) on either side. Following the part line of the bumper to the body, gently pull out to release the bumper cover sides. The last hook and tab pair (REF 9, PINK arrow), needs to be released carefully by pulling up and out. This is more easily accomplished by grasping the bumper cover at the taillight cutouts. Next, release the 2 push pins (REF 10, LT BLUE circle) below the taillight openings. The last 4 hidden push pin retainers are just below the trunk opening, between the taillights (REF 11, PURPLE circles). Pull the bumper cover straight back from the body to release the pins from the body. Before completely removing the bumper cover, be sure the electrical harness (from STEP 4) is completely free from the body.

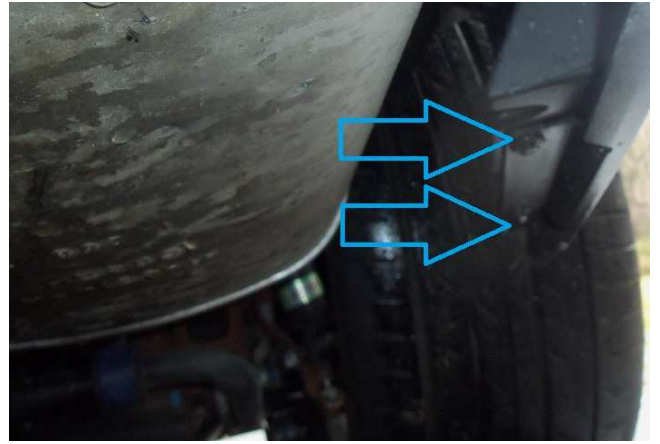
STEP 7: Bumper Support Foam Removal

Locate the 2 push pins that retain the support foam to the bumper support beam (REF 12). Using the non-marring pry tool, remove the pins. Remove the support foam and set aside.

REF5 (Driver side shown. Passenger side similar)



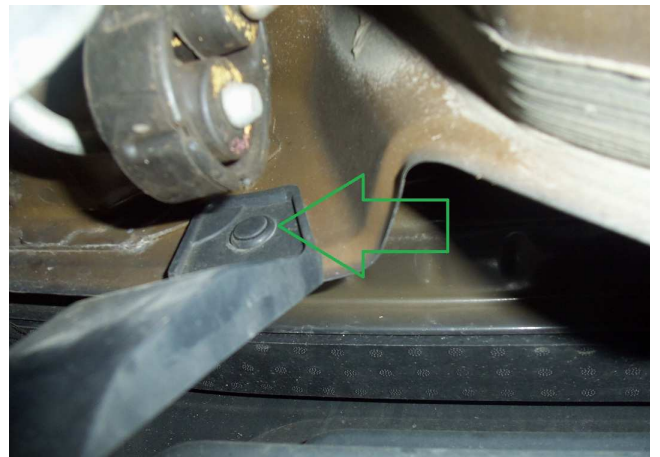
REF 6 (Passenger side shown. Driver side similar)



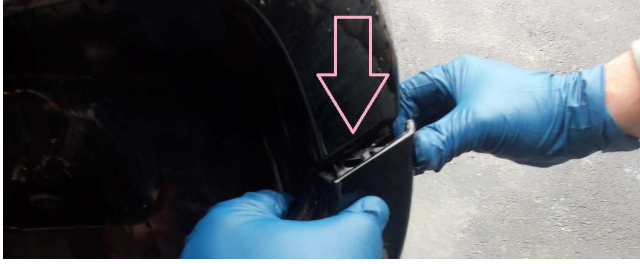
REF 7



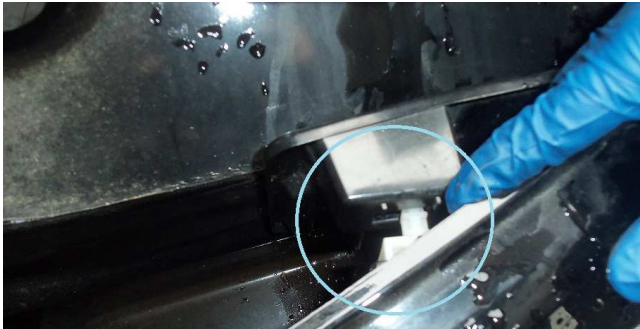
REF 8 (Passenger side shown. Driver side similar)



REF 9 (Passenger side shown. Driver side similar)



REF 10 (Passenger side shown. Driver side similar)



STEP 8: Outside Bracket Installation

Insert (4) Carriage Bolts into square holes of the Outside Bracket as shown in REF 13 ORANGE arrow and secure with retaining clips.

Install the Outside Bracket on the center of the Bumper Beam with "BR" logo facing away from the body and right side up as shown in REF 14.

STEP 9: Inside Bracket Installation

Insert (2) Clip Nuts into the Inside Bracket with the protruding threaded barrels facing inward as shown in REF 15, LT GREEN arrows. Clip Nuts will be forced around the material to engage into the holes and wrap around at the recessed areas of the Rear Bracket flange.

Install the Inside Bracket behind the Bumper Beam by tilting it back and engaging the Carriage Bolts into the rectangular slots in the upper flange (as shown in REF 16, RED arrow) and then working it up until the upper flange tucks in above the Outside Bracket flange. The Inside and Outside Brackets have tabs that engage into dimples on the top and bottom of the Bumper Beam. Make sure those are engaged and centered on the Bumper Beam as shown in REF17, BLUE arrows. Bolt the Front Bracket to the Rear Bracket with (2) Hex Flange Bolts (as shown in REF 18, LT BLUE arrows).

DO NOT TIGHTEN UNTIL LATER!!

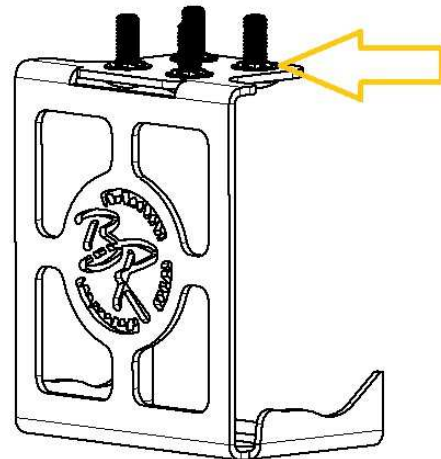
REF 11



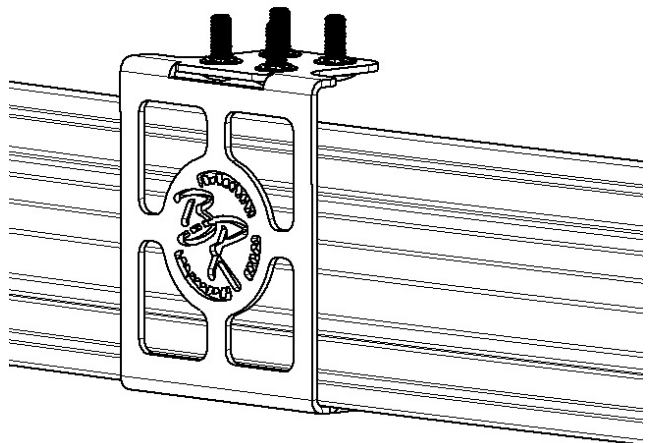
REF 12 (Driver side shown. Passenger side similar)



REF 13



REF 14



STEP 10: Final Tow Hook Kit Assembly

With the Loop Removed from the Base, set the Loop Base onto the (4) Carriage Bolts through the rearmost pattern of the slots, so the Base is as far out as possible and secure with (4) Flange Hex Head Nuts. Tighten to 25ft/lbs. Now tighten (2) Hex Flange Bolts on the bottom to 4ft/lbs. Remove Loop and Pin and Reinstall Bumper Beam Foam.

STEP 11: Bumper Cover Modification

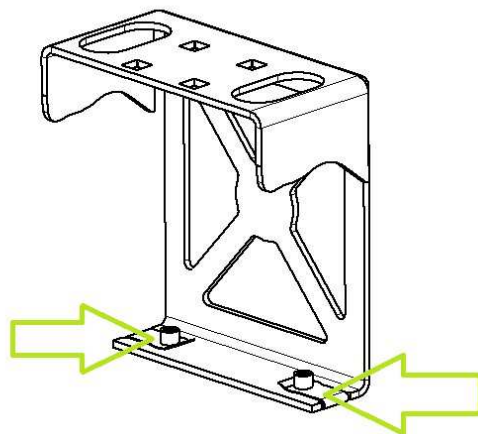
Remove the license plate and frame (if equipped) and set aside. Coat the rear surface of the Loop Mount Hinge with some grease or other paste that will wipe off easily. It will be used to transfer the Loop Mount location to the backside of the bumper cover. Place the bumper cover back onto the body, but only secure the 4 push pins from STEP 6 (REF 11, PURPLE circles). Push the Bumper Cover against the Loop to transfer the material. Remove the bumper cover and place on a soft, non-marring surface so there is full visibility of the transfer mark. Drill a 1/4" hole at (4) corners of the transfer mark. Using a sharp razor blade, cut out the rectangular shape between the holes and inside the marks. It isn't critical to stay within the marks, but keep the cuts as close as you can. Test fit the Bumper Cover onto the car and check for proper clearance for the Loop to pass through. Pull, trim and repeat in small cuts to minimize the hole size. When satisfied with fitment, reinstall the bumper cover reversing the process from STEP 6 to STEP 1.

STEP 12: Final Assembly

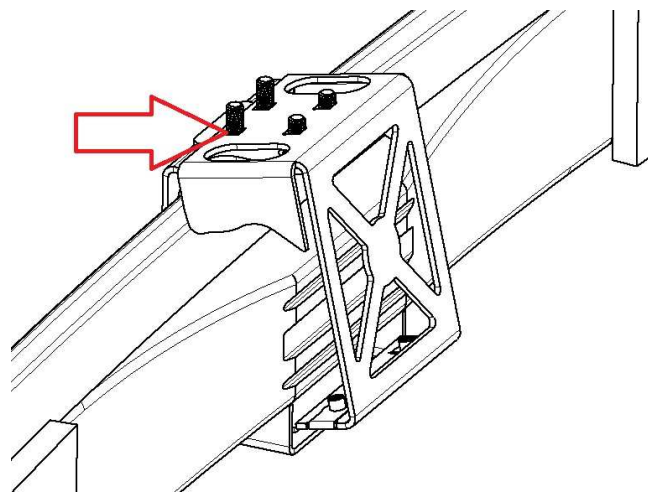
Loop may be reinstalled or left off prior to reinstalling the license plate. Reinstall license plate and frame (if equipped).

STEP 13: ENJOY YOUR BLOWFISH RACING PRODUCTS REAR TOW HOOK KIT!

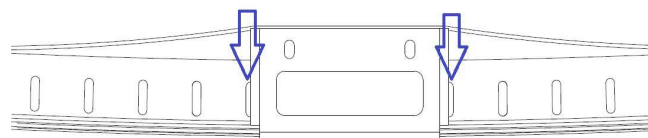
REF 15



REF 16



REF 17



REF 18

