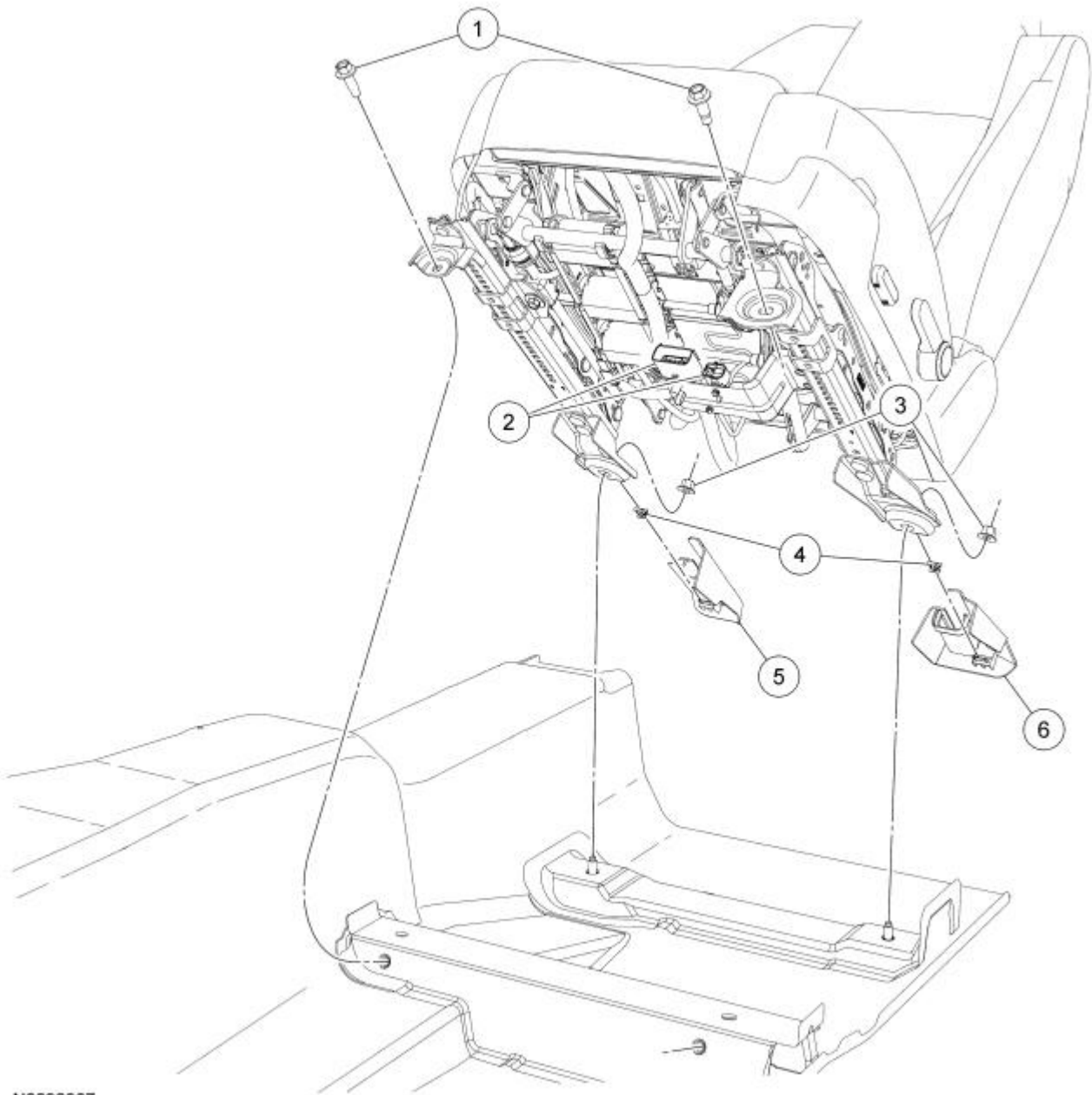


Seat — Front

NOTE: LH shown, RH similar.



2014
Mustang
Workshop
Manual

N0096967

Item	Part Number	Description
1	—	Seat mounting front bolts (2 required)
2	—	Seat electrical connectors (part of 14A699)
3	W520113	Seat mounting rear nuts (2 required)
4	—	Rear nut cover retainers (2 required) (part of 61748)
5	61748	Rear nut cover, inboard

6	61748	Rear nut cover, outboard
---	-------	--------------------------

Removal



WARNING: Never probe the electrical connectors on airbag, Safety Canopy or side air curtain assemblies. Failure to follow this instruction may result in the accidental deployment of these assemblies, which increases the risk of serious personal injury or death.

NOTE: The air bag warning indicator illuminates when the correct Restraints Control Module (RCM) fuse is removed and the ignition is ON.

NOTE: The Supplemental Restraint System (SRS) must be fully operational and free of faults before releasing the vehicle to the customer.

1. Position the seat to access all seat mounting fasteners and depower the SRS. For additional information, refer to Supplemental Restraint System (SRS) Depowering and Repowering in the General Procedures portion of [Section 501-20B](#).
2. Remove the 2 rear nut covers.
3. Remove the 2 rear nuts.
4. Remove the 2 front bolts.
5. Disconnect the 2 electrical connectors and remove the seat.

Installation

1. Position the seat in the vehicle and connect the electrical connectors.
 2. Install and hand-tighten the 2 front bolts and 2 rear nuts.
 - For manual seat track, make sure both track rails are correctly aligned and locked in position before tightening the seat mounting fasteners.
 3. Tighten the seat mounting fasteners in the following sequence:
 1. Tighten the inboard front bolt to 48 Nm (35 lb-ft).
 2. Tighten the outboard front bolt to 48 Nm (35 lb-ft).
 3. Tighten the inboard rear nut to 48 Nm (35 lb-ft).
 4. Tighten the outboard rear nut to 48 Nm (35 lb-ft).
 4. Install the 2 rear nut covers.
 5. Repower the SRS. For additional information, refer to Supplemental Restraint System (SRS) Depowering and Repowering in the General Procedures portion of [Section 501-20B](#).
-

Seat Backrest — Front

Special Tool(s)



ST2834-A

Vehicle Communication Module (VCM) and Integrated Diagnostic System (IDS) software with appropriate hardware, or equivalent scan tool

Removal

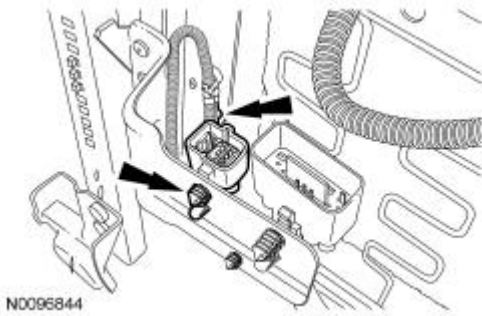
NOTE: For parts identification and location, refer to [Seat — Exploded View, Front](#) in this section.

NOTE: Note all harness routing for correct installation.

1. Remove the seat and depower the Supplemental Restraint System (SRS). For additional information, refer to [Seat — Front](#) in this section.
2. Remove the clip and recline handle.
 - Access the clip from between the cushion cover and side shield.
 - Use a suitable tool to pull the clip forward and release.
3. If equipped, remove the manual height adjust handle.
 - Remove the handle cover.
 - Remove the 2 screws and manual height adjust handle.
4. **NOTICE: Do not reinstall the cushion side shield or side shield retainers after removal. These are one-time-use items that become damaged during removal and may not remain attached if reinstalled. Install a new side shield during seat assembly.**

Remove and discard the cushion side shield.

- Remove the screw at the rear of the cushion side shield.
 - Separate the side shield and retainers from the seat.
 - If equipped, disconnect the electrical connector, remove the seat control switch knob and seat control switch.
 - If equipped, disconnect the electrical connector and remove the power lumbar switch.
 - Remove and discard the cushion side shield.
 - Remove any remaining retainers from the seat and discard the one-time use retainer clips.
5. Separate the side air bag module electrical connector and wire harness pin-type retainers from the seat track bracket and cushion frame.

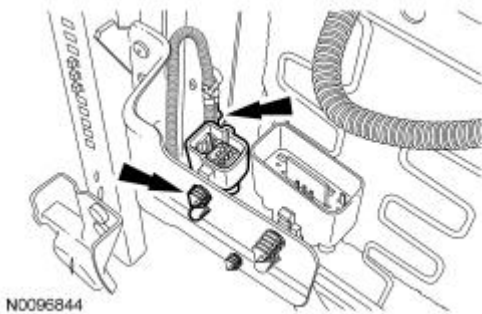


6. If equipped with heated seats or power lumbar, release the cushion cover rear J-clip, disconnect the electrical connector(s) and separate the wire harness from the cushion frame.
7. Remove the seat backrest.
 - Release the cushion and backrest covers for access and remove the 4 backrest mounting bolts.
 - Separate the backrest from the cushion frame.

Installation


All seats

1. Position the backrest to the cushion frame and install the 4 backrest mounting bolts.
 - Tighten to 55 Nm (41 lb-ft).
2. If equipped, connect and attach the heater mat and power lumbar electrical connectors.
 - Fasten the cushion cover rear J-clip.
3. Install the side air bag module wire harness and connect the electrical connector.
 - Route the wiring harness as noted in removal.



4. Install a new cushion side shield.
 - If equipped, install the seat control switch, knob and electrical connector.
 - If equipped, install the power lumbar switch and connect the electrical connector.
 - Make sure all the side shield retainers are correctly installed to the side shield.
 - Install the side shield and retainers to the seat.
 - Install the side shield screw.
5. If equipped, install the manual height adjust handle, 2 screws and cover.
6. Install the retainer to the recline handle and install to the seat.
7. Install the seat and reprogram the SRS. For additional information, refer to [Seat — Front](#) in this section.

Passenger seat

8.  **WARNING:** Make sure the front passenger seat repair is complete, the seat and all attached components (head restraint, seat side shield, etc.) are correctly assembled, and the seat is correctly installed to the vehicle before using System Reset to rezero the seat weight. Failure to follow these instructions may result in incorrect operation of the occupant classification system (OCS) and increases the risk of serious personal injury or death in a crash.

NOTICE: To prevent system failure, the following precautions must be taken before carrying out the Occupant Classification Sensor (OCS) system reset:


- Make sure the voltage to the Occupant Classification System Module (OCSM) is above 8 volts and less than 18 volts.
- Make sure the OCS system is not at a temperature below 6°C (42°F) or above 36°C (97°F) when initiating the OCS system reset. If the vehicle has been exposed to extreme cold or hot temperatures, the vehicle must be exposed and kept at a temperature within the limits, 6°C to 36°C (42°F to 97°F) for a minimum of 30 minutes.
- Make sure nothing is present on the passenger seat before carrying out the OCS system reset and nothing is placed on the seat during the process.
- Make sure a minimum 8-second time period has passed after cycling the ignition ON before carrying out the OCS system reset.


Carry out the Occupant Classification Sensor (OCS) system reset.

9. If the first system reset attempt was unsuccessful, make sure no OCSM DTCs are present. If DTC C1941 is the only one retrieved, it will clear upon a successful system reset. All other OCS system DTCs must be diagnosed and repaired before carrying out the OCS system reset.
10. Carry out a thorough inspection of the following and repair any concerns found.
- OCS system connector and wiring for damage
 - Pressure sensor hose for kinks and/or damage
 - Seat-related wiring harness and body wiring harness terminals and connectors for damage
11. Carry out a second OCS system reset. If the system reset was unsuccessful, install a new OCS system service kit. For additional information, refer to the Removal and Installation procedures in [Section 501-20B](#).
12. Prove out the SRS as follows:
Turn the ignition from ON to OFF. Wait 10 seconds, then turn the ignition ON and monitor the air bag warning indicator with the air bag modules installed. The air bag warning indicator will light continuously for approximately 6 seconds and then turn off. If an air bag SRS fault is detected, the air bag warning indicator will:
- fail to light.
 - remain lit continuously.
 - flash.
- The flashing might not occur until approximately 30 seconds after the ignition has been turned from the OFF to the ON position. This is the time required for the Restraints Control Module (RCM) to complete the testing of the SRS. If the air bag warning indicator is inoperative and a SRS fault exists, a chime will sound in a pattern of 5 sets of 5 beeps. If this occurs, the air bag warning indicator and any SRS fault discovered must be diagnosed and repaired.
Clear all RCM and OCSM CMDTCs.
-

Seat Backrest Cover — Front

Removal and Installation

 **WARNING:** Front seat backrest trim covers installed on seats equipped with seat side airbags cannot be repaired. A new trim cover must be installed. Cleaning is permissible. Failure to follow these instructions may result in the seat side airbag deploying incorrectly and increase the risk of serious personal injury or death in a crash.

 **WARNING:** To correctly retain the backrest trim cover, always install 2 hog rings when attaching the backrest trim cover wire to the listing wire in each foam pad window. Failure to follow this instruction may result in the seat side air bag module deploying incorrectly and increases the risk of serious personal injury or death in a crash.

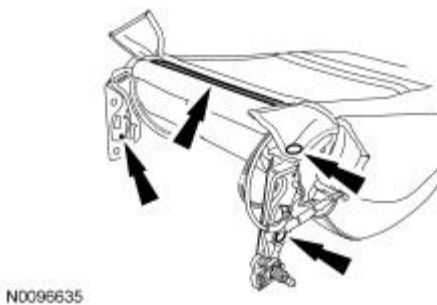
NOTE: For parts identification and location, refer to [Seat — Exploded View, Front](#) in this section.

All seats

1. Remove the seat backrest. For additional information, refer to [Seat Backrest — Front](#) in this section.

Low back seats

2. Remove the 2 head restraint guide sleeves. For additional information, refer to [Head Restraint Guide Sleeve](#) in this section.
3. Release the backrest cover pin-type retainers and J-clip.



High back seats

4. Release the 3 backrest cover J-clips.



5. Remove the seat belt bezels.
 - Grasp the outer edge of the seat belt bezels and pull outward.



All seats

6. Remove the backrest latch handle and bezel screw. Slide down, pull and remove the backrest latch bezel.

Low back seats

7. **NOTICE:** Use care when separating the seat backrest cover from the hook-and-loop strips. The hook-and-loop strips may be torn from the foam pad.

Invert the seat backrest cover and remove all hog rings.

- For installation, make sure 2 hog rings are installed at each location as noted in removal.

All seats

8. Remove the backrest cover.
 9. To install, reverse the removal procedure.
-

Seat Cushion Cover — Front

Removal

NOTE: For parts identification and location, refer to [Seat — Exploded View, Front](#) in this section.

1. Remove the seat backrest. For additional information, refer to [Seat Backrest — Front](#) in this section.
2. Release all seat cushion cover fasteners from the cushion frame.
3. **NOTICE:** Use care when separating the seat cushion cover from the hook-and-loop strips. The hook-and-loop strips may be torn from the foam pad.

Remove all the hog rings and cushion cover.

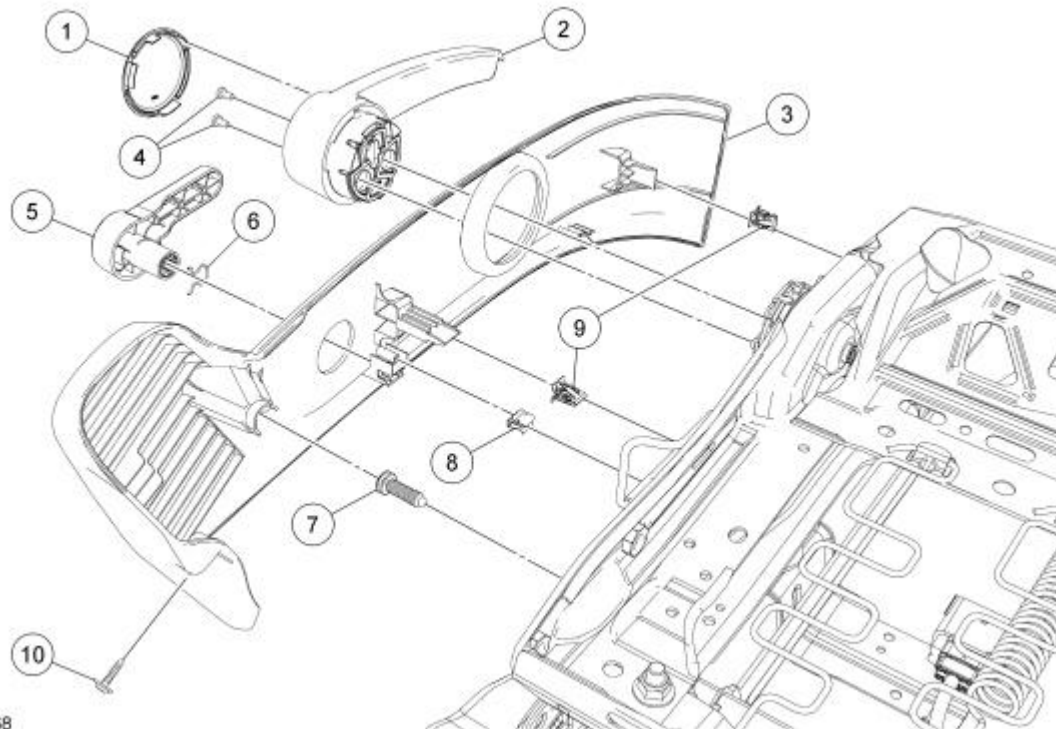
Installation

1. Position the cushion cover to the foam pad and install 2 hog rings at each location.
 2. Fasten all the cushion cover retainers to the cushion frame.
 3. Install the seat backrest. For additional information, refer to [Seat Backrest — Front](#) in this section.
-

Seat — Exploded View, Front

Cushion Side Shield — Manual

NOTE: LH shown, RH similar.

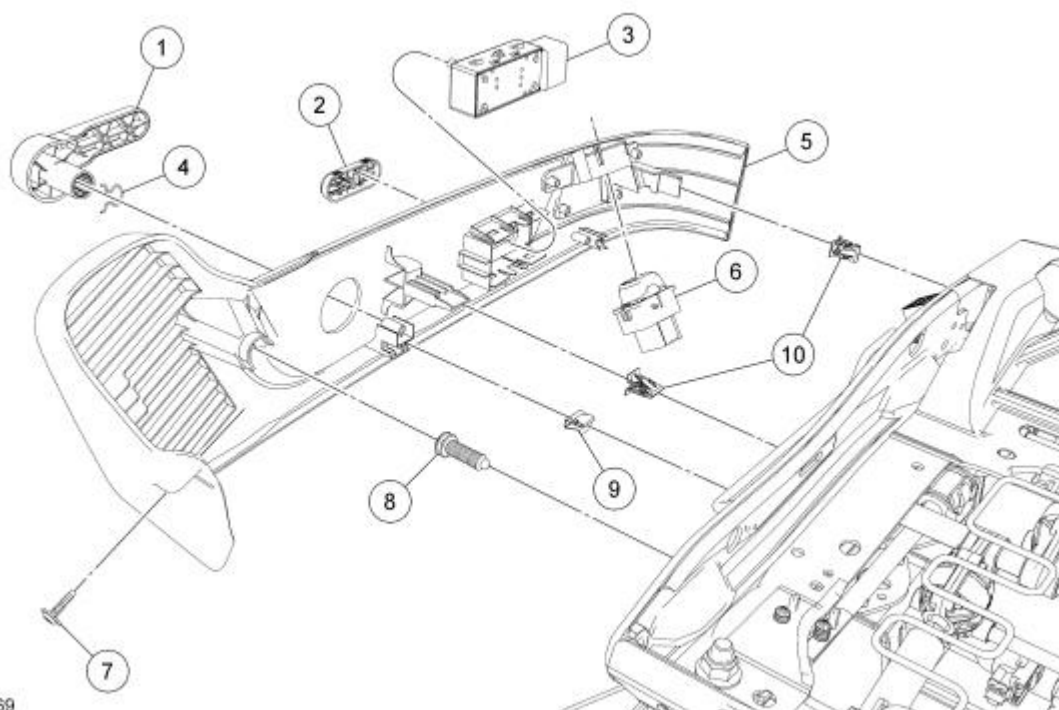


N0096968

Item	Part Number	Description
1	62768	Manual height adjust handle cover
2	61753	Manual height adjust handle
3	62187	Side shield
4	W711217	Manual height adjust handle screws (2 required)
5	62622	Recline handle
6	—	Recline handle retainer (part of 62622)
7	—	Side shield pin-type retainer (part of 62187)
8	—	Side shield retainer, Z-clip (part of 62187)
9	—	Side shield retainers (2 required) (part of 62187)
10	W711216	Side shield screw

Cushion Side Shield — Power

NOTE: LH shown, RH similar.

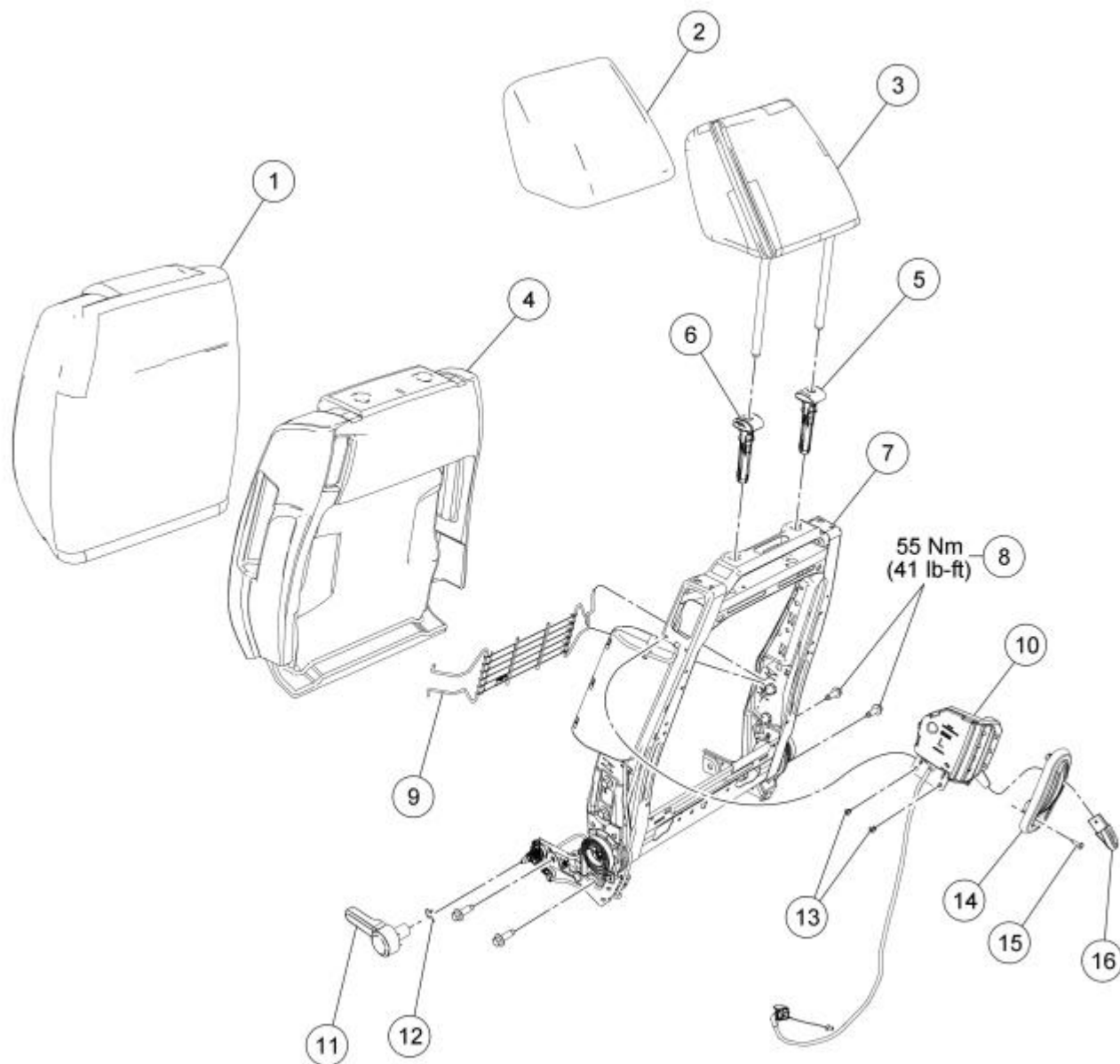


N0096969

Item	Part Number	Description
1	62622	Recline handle
2	14711	Seat control switch knob
3	14A701	Seat control switch
4	—	Recline handle retainer (part of 62622)
5	62187	Side shield
6	14A701	Lumbar control switch
7	W711216	Side shield screw
8	—	Side shield pin-type retainer (part of 62187)
9	—	Side shield retainer, Z-clip (part of 62187)
10	—	Side shield retainers (2 required) (part of 62187)

Seat Backrest — Manual

NOTE: Low back seat shown, high back seat similar.



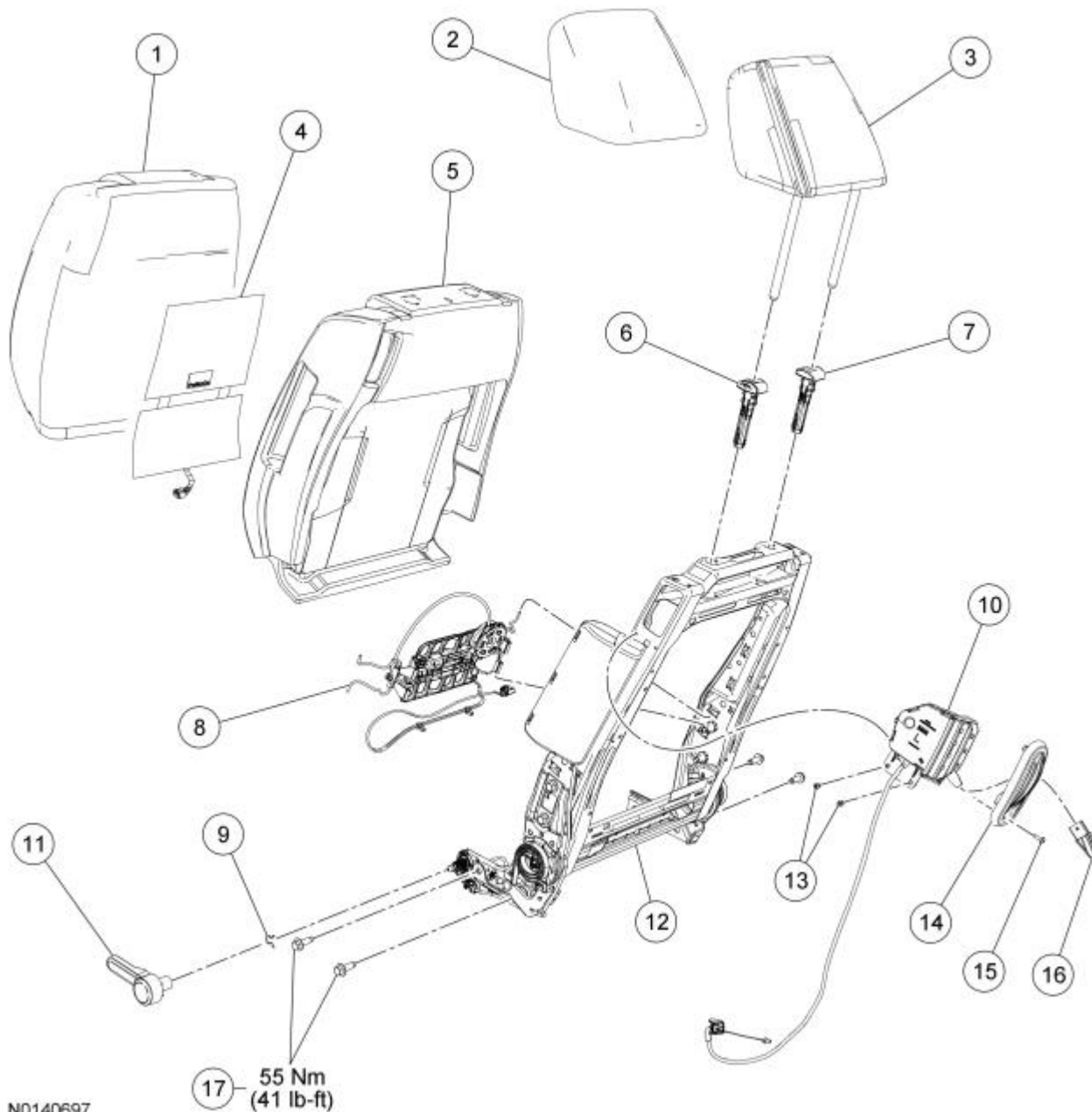
N0140695

Item	Part Number	Description
1	64416 RH/ 64417 LH	Backrest cover
2	—	Head restraint cover (low back seat only)
3	611A08	Head restraint (low back seat only)
4	64810 RH/ 64811 LH	Backrest foam pad
5	610A18	Head restraint guide sleeve, RH (low back seat only)
6	610A16	Head restraint guide sleeve, LH (low back seat only)
7	61019 RH/ 61019 LH	Backrest frame
8	W500633	Backrest mounting bolts
9	63226	Lumbar support
10	62432	Backrest latch release
11	62622	Recline handle
12	—	Recline handle retainer (part of 62622)

13	W711024	Backrest latch release rivets (2 required)
14	62672	Backrest latch release bezel
15	W506943	Backrest latch release bezel screw
16	62762	Backrest latch release handle

Seat Backrest — Power

NOTE: LH shown, RH similar.



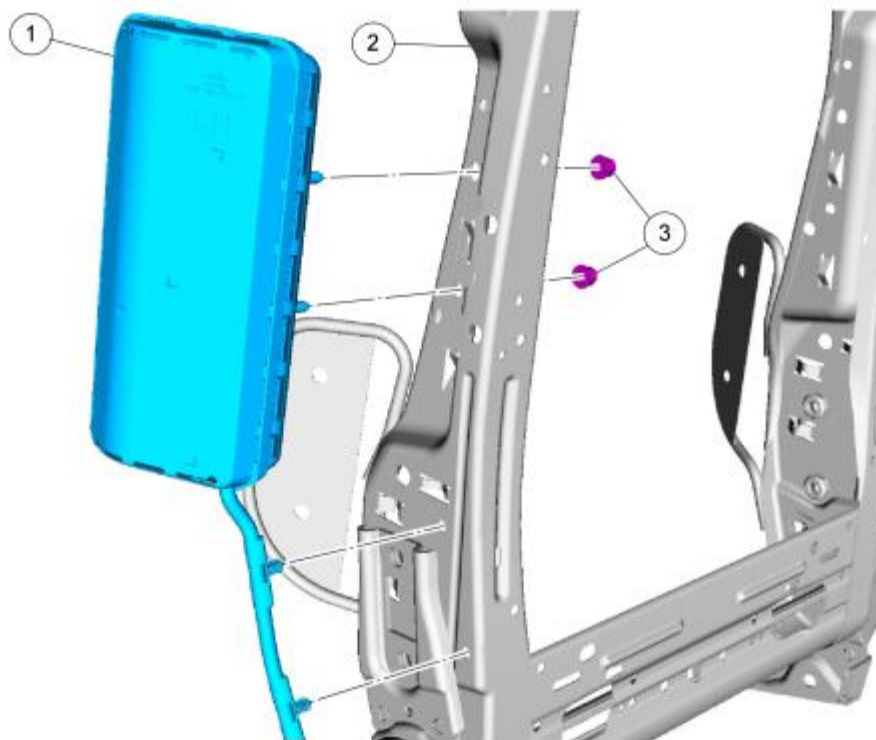
N0140697

Item	Part Number	Description
1	64417	Backrest cover
2	—	Head restraint cover
3	611A08	Head restraint

4	14D696	Backrest heater mat (if equipped)
5	64811	Backrest foam pad
6	610A16	Head restraint guide sleeve, LH
7	610A18	Head restraint guide sleeve, RH
8	65500	Power lumbar assembly (if equipped)
9	—	Recline handle retainer (part of 62622)
10	62432	Backrest latch release
11	62622	Recline handle
12	61019	Backrest frame
13	W711024	Backrest latch release rivets (2 required)
14	62672	Backrest latch release bezel
15	W506943	Backrest latch release bezel screw
16	62762	Backrest latch release handle
17	W500633	Backrest mounting bolts

Seat Side Air Bag Module

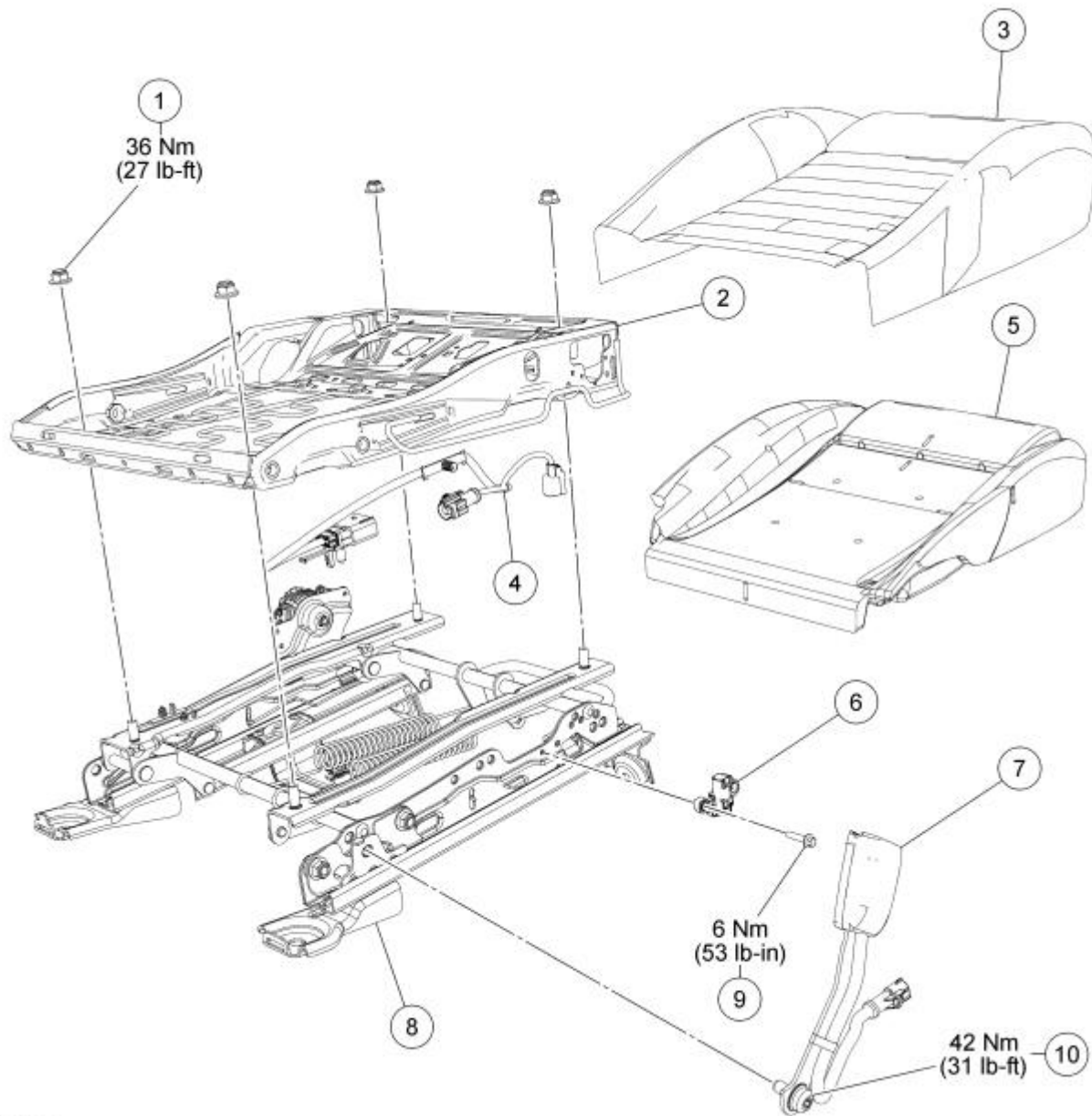
NOTE: LH shown, RH similar.



N0135722

Item	Part Number	Description
1	611D11	Side air bag module
2	61019	Backrest frame
3	N620480	Side air bag module nuts

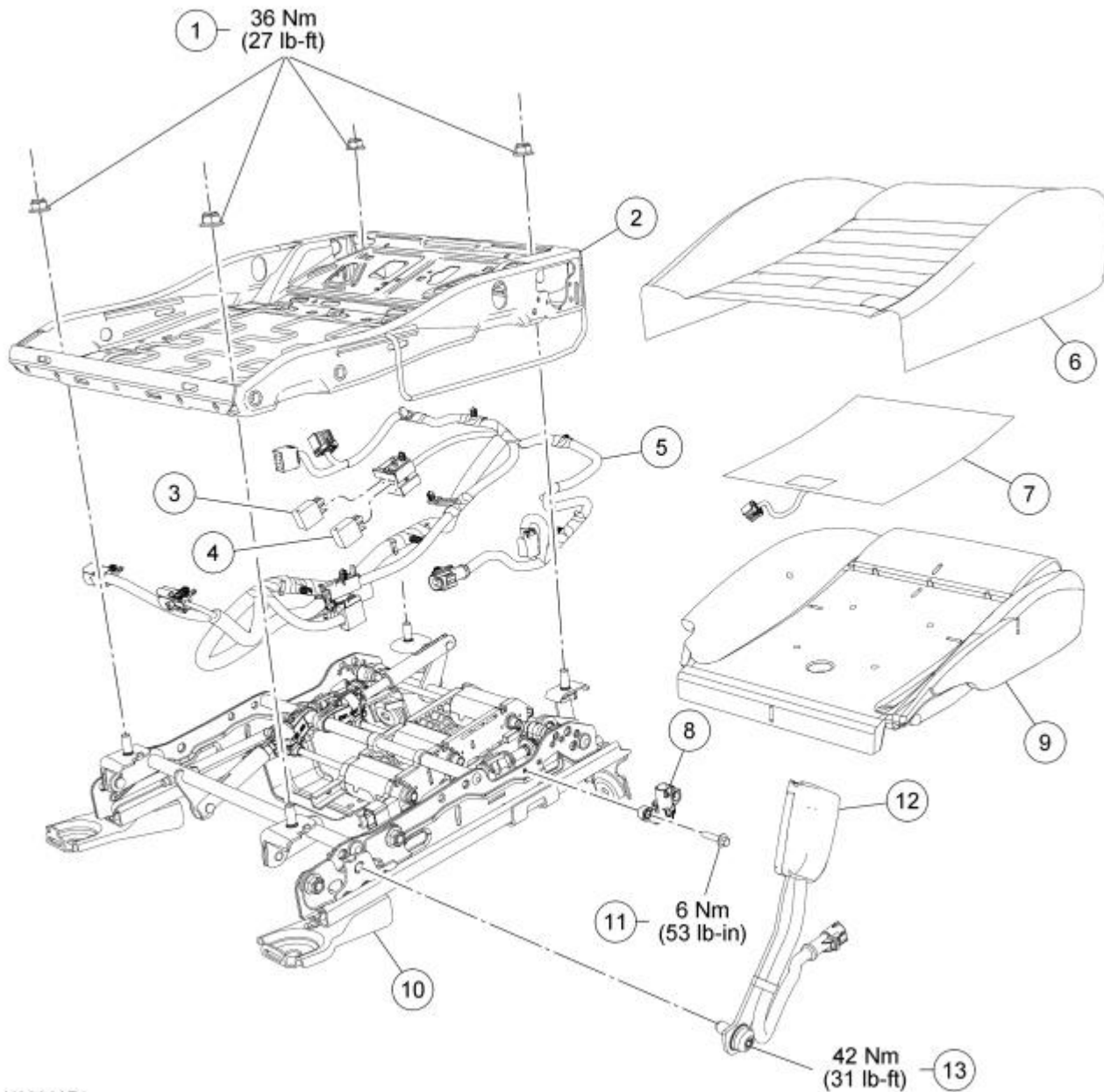
Seat Cushion — Driver, Manual



N0096973

Item	Part Number	Description
1	W520113	Seat track nut (4 required)
2	63101	Cushion frame
3	62901	Cushion cover
4	14A699	Seat wire harness
5	632A23	Cushion foam pad
6	14B416	Seat position sensor
7	61203	Safety belt buckle
8	61711	Seat track
9	W505256	Seat position sensor bolt
10	—	Safety belt buckle bolt (part of 61203)

Seat Cushion — Driver, Power



N0096974

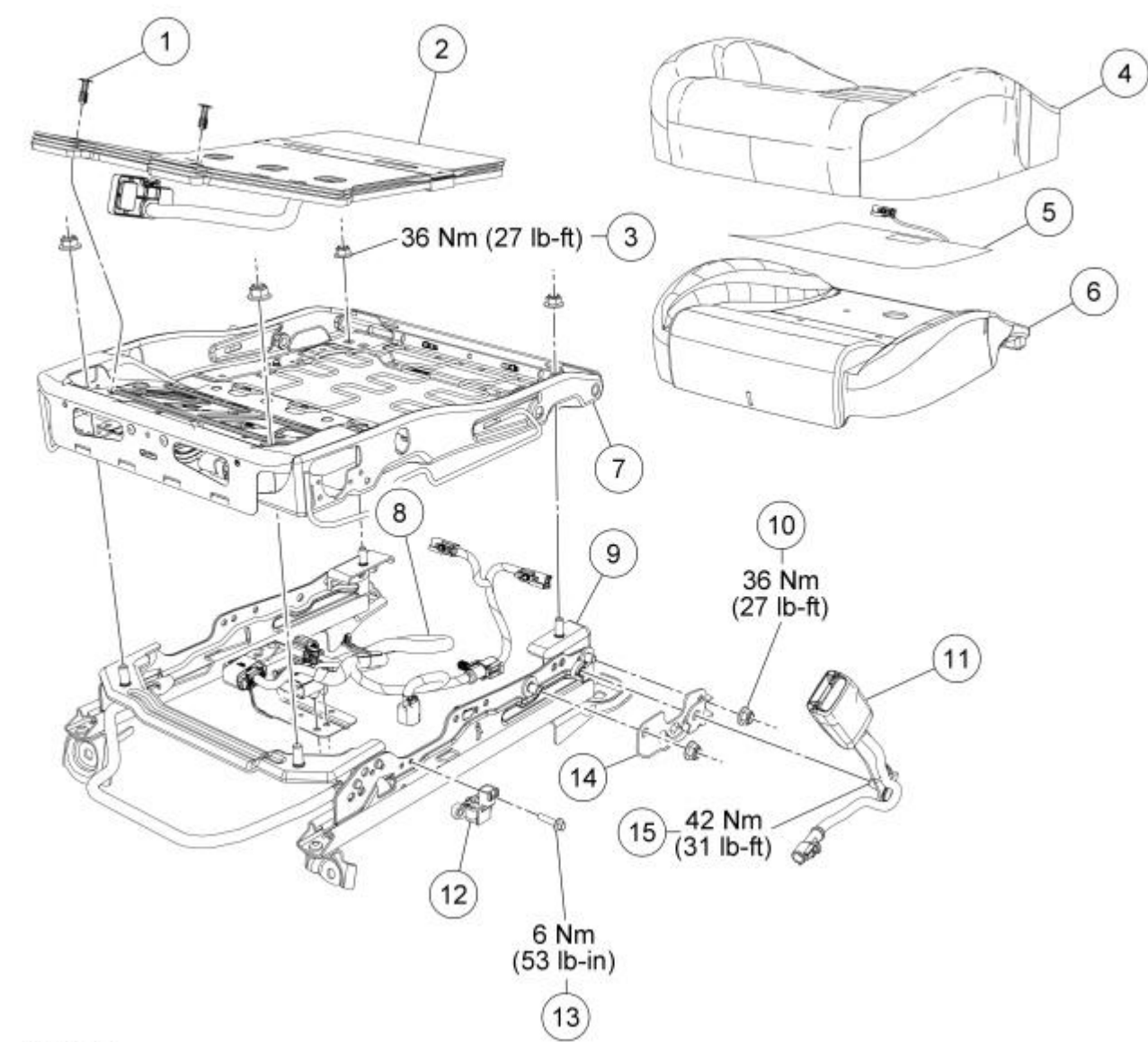
Item	Part Number	Description
1	W520113	Seat track nuts (4 required)
2	63101	Cushion frame
3	14N089	Heated seat relay, driver
4	14N089	Heated seat relay, passenger
5	14A699	Seat wire harness
6	62901	Cushion cover
7	14D698	Cushion heater mat (if equipped)
8	14B416	Seat position sensor
9	632A23	Cushion foam pad

10	61711	Seat track
11	W505256	Seat position sensor bolt
12	61203	Safety belt buckle
13	—	Safety belt buckle bolt (part of 61203)

Seat Cushion — Passenger

NOTE: Production Occupant Classification System (OCS) system is shown. For OCS system service kit, refer to Occupant Classification Sensor procedure in [Section 501-20B](#).

NOTE: Manual seat shown, power similar.



Item	Part Number	Description
------	-------------	-------------

1	—	Pin-type retainer [part of production Occupant Classification System (OCS) system]
2	—	<u>OCS</u> bladder (part of 632A22)
3	W520113	Seat track nuts
4	62900	Cushion trim cover
5	—	Cushion heater mat (if equipped)
6	—	Cushion foam pad (part of 632A22)
7	63100	Cushion frame
8	14A576	Wire harness
9	61704	Seat track
10	W520113	Bracket nut (2 required)
11	61202	Safety belt buckle
12	14B416	Seat position sensor
13	W505256	Seat position sensor bolt
14	—	Safety belt buckle bracket
15	—	Safety belt buckle bolt (part of 61202)

1. For additional information, refer to the procedures in this section.
-