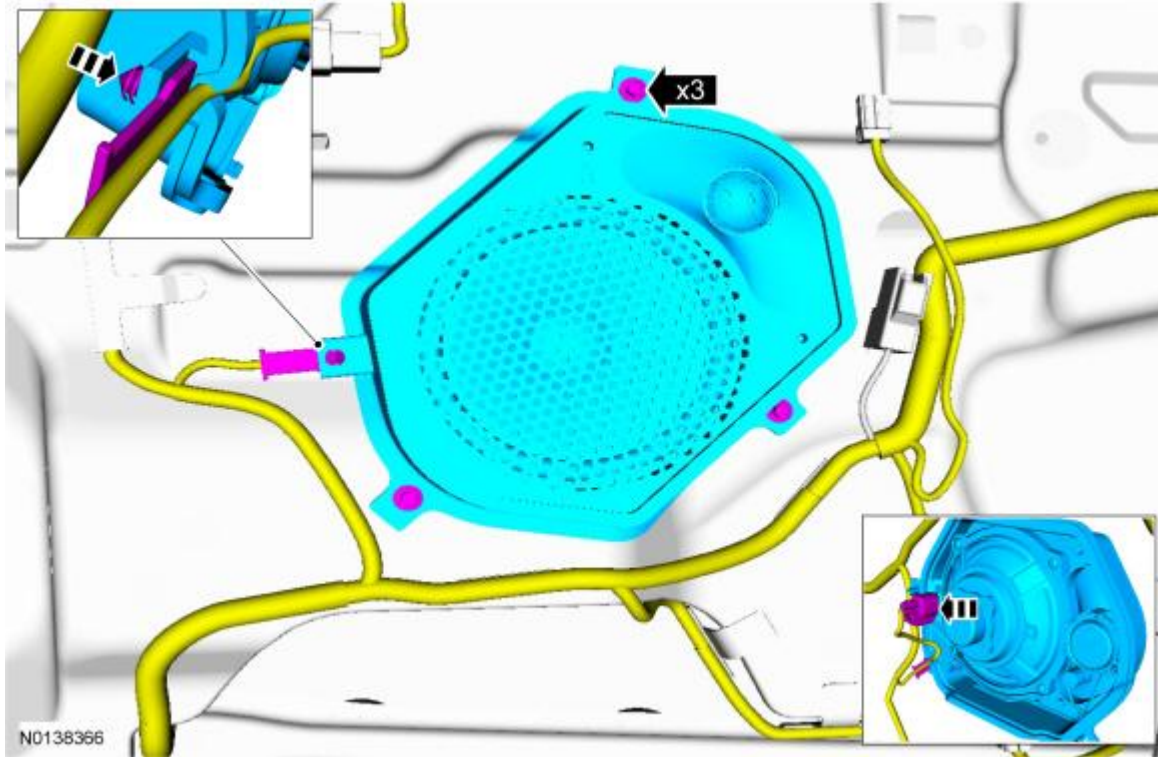


Speaker — Door

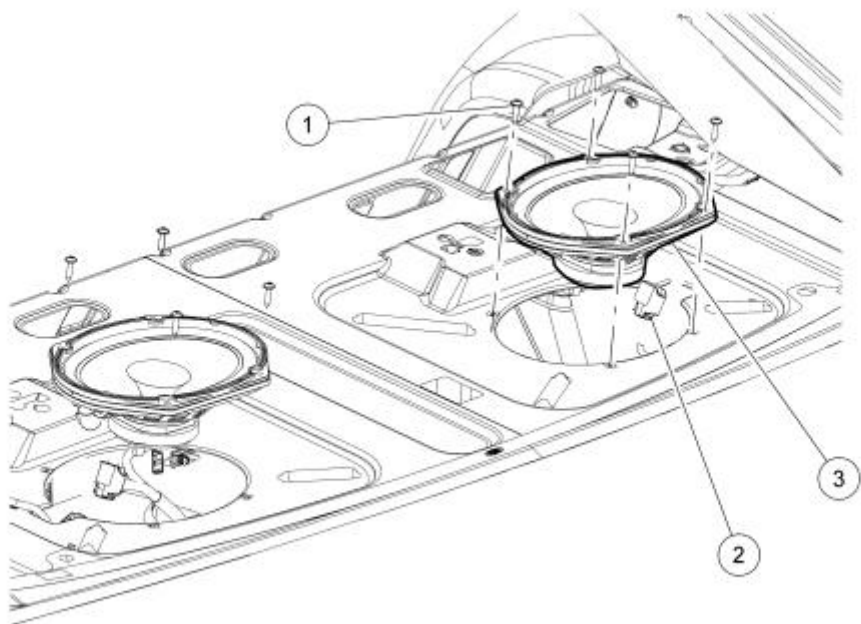
Removal and Installation

1. Remove the door trim panel. For additional information, refer to Section 501-05.
2. Remove the 3 screws and the door speaker.
 - Detach the wiring harness push pin.
 - Disconnect the electrical connector.



3. To install, reverse the removal procedure.
-

Speaker — Parcel Shelf



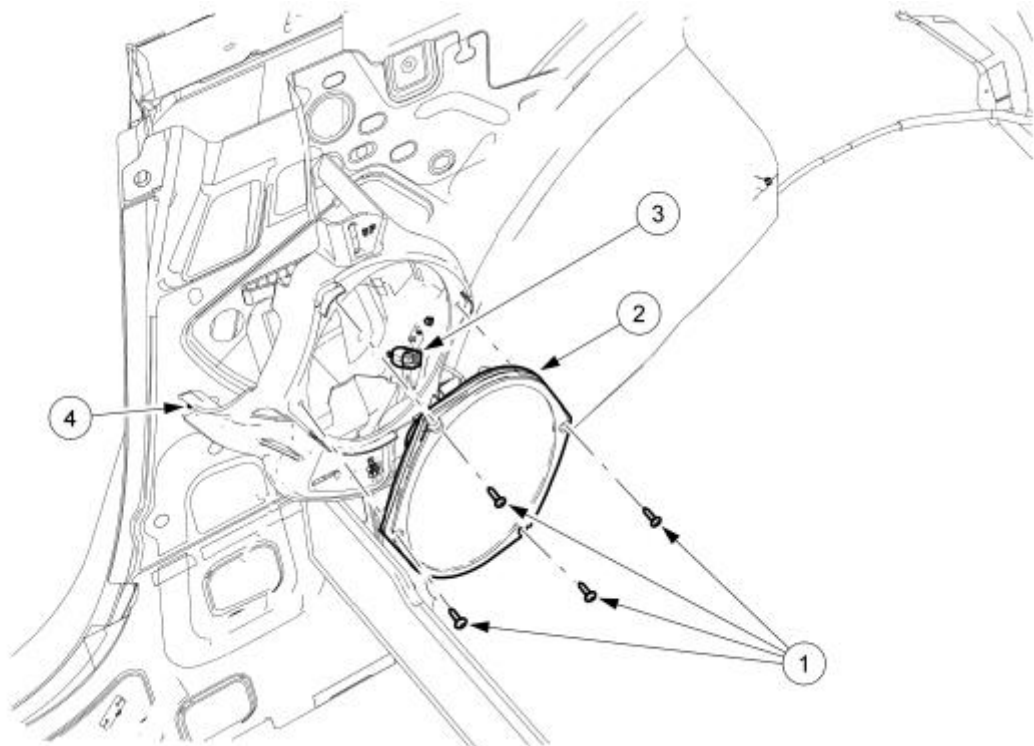
N0099593

Item	Part Number	Description
1	W705314	Parcel shelf speaker screws (4 required)
2	—	Parcel shelf speaker electrical connector (part of 14A005)
3	18808	Parcel shelf speaker

Removal and Installation

1. Remove the parcel shelf trim panel. For additional information, refer to Section 501-05.
 2. Remove the 4 screws and the parcel shelf speaker.
 - Disconnect the electrical connector.
 3. To install, reverse the removal procedure.
-

Speaker — Quarter Panel



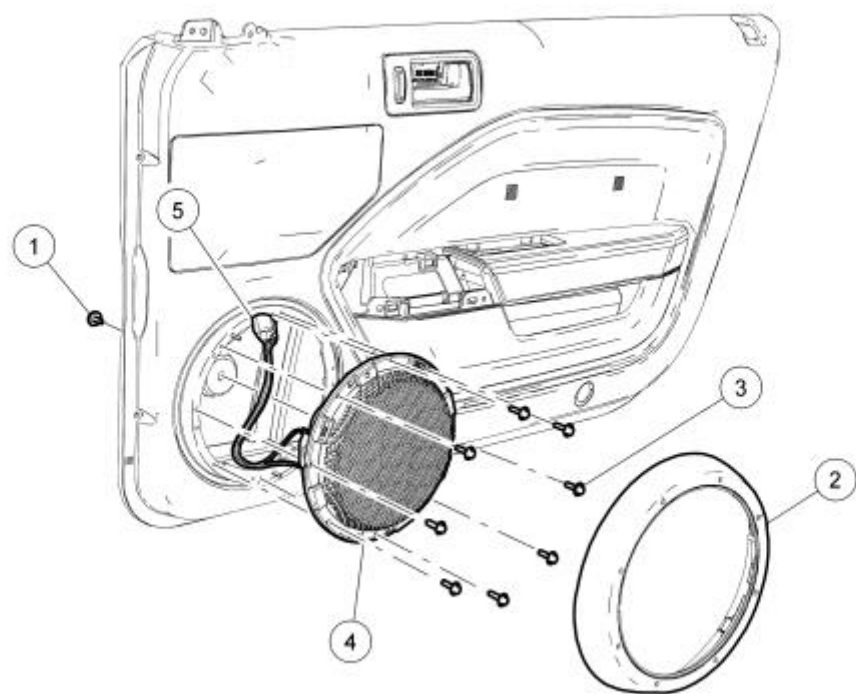
N0012745

Item	Part Number	Description
1	W705314	Quarter panel speaker screws (4 required)
2	18808	Quarter panel speaker
3	—	Quarter panel speaker electrical connector (part of 14A005)
4	W701930	Quarter panel speaker mounting bracket screws (3 required)

Removal and Installation

1. Remove the quarter trim panel. For additional information, refer to Section 501-05.
 2. Remove the 4 screws and the quarter panel speaker.
 - Disconnect the electrical connector.
 3. To install, reverse the removal procedure.
-

Speaker — Subwoofer



N0099449

Item	Part Number	Description
1	W707281	Door subwoofer speaker bolt
2	18978	Door subwoofer speaker grille trim
3	N606674	Door subwoofer speaker screws (8 required)
4	18808	Door subwoofer speaker
5	—	Door subwoofer speaker electrical connector (part of door harness)

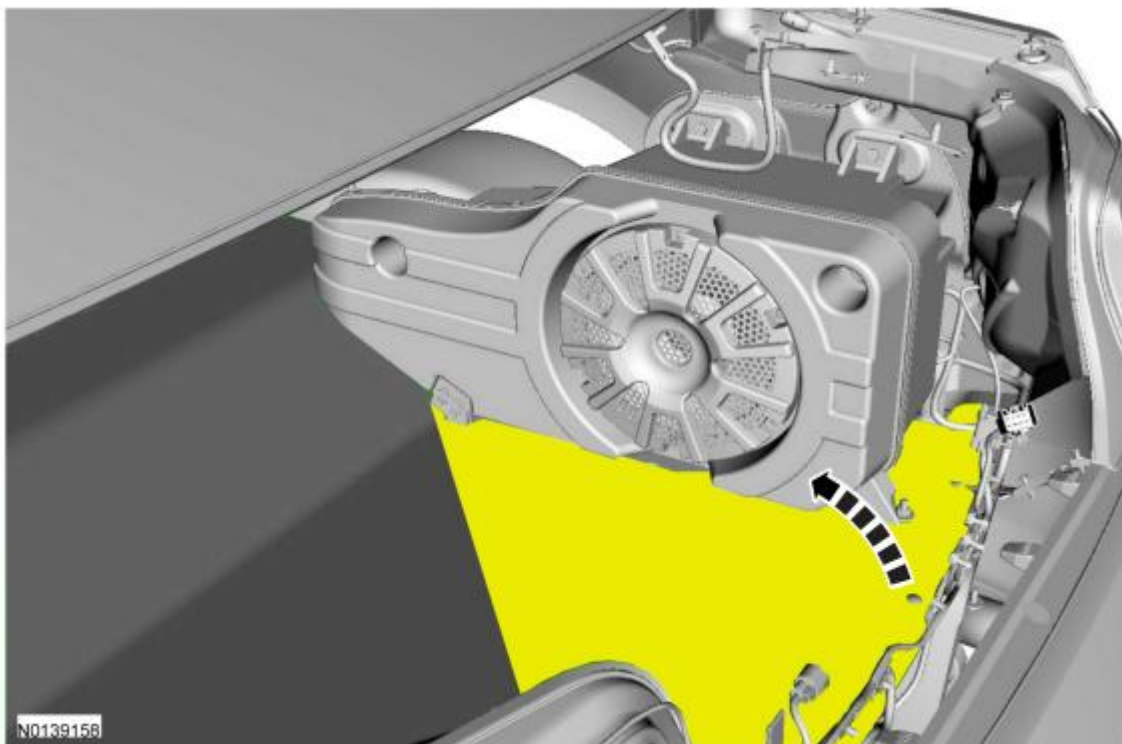
Removal and Installation

1. Remove the door trim panel. For additional information, refer to Section 501-05.
 2. Using a suitable tool such as a trim tool, remove the door subwoofer speaker grille trim by prying it from the door panel.
 3. Remove the door subwoofer speaker bolt.
 4. Remove the 8 screws and the door subwoofer speaker.
 - Push the wiring harness grommet through the door trim panel.
 - Disconnect the electrical connector.
 5. To install, reverse the removal procedure.
-

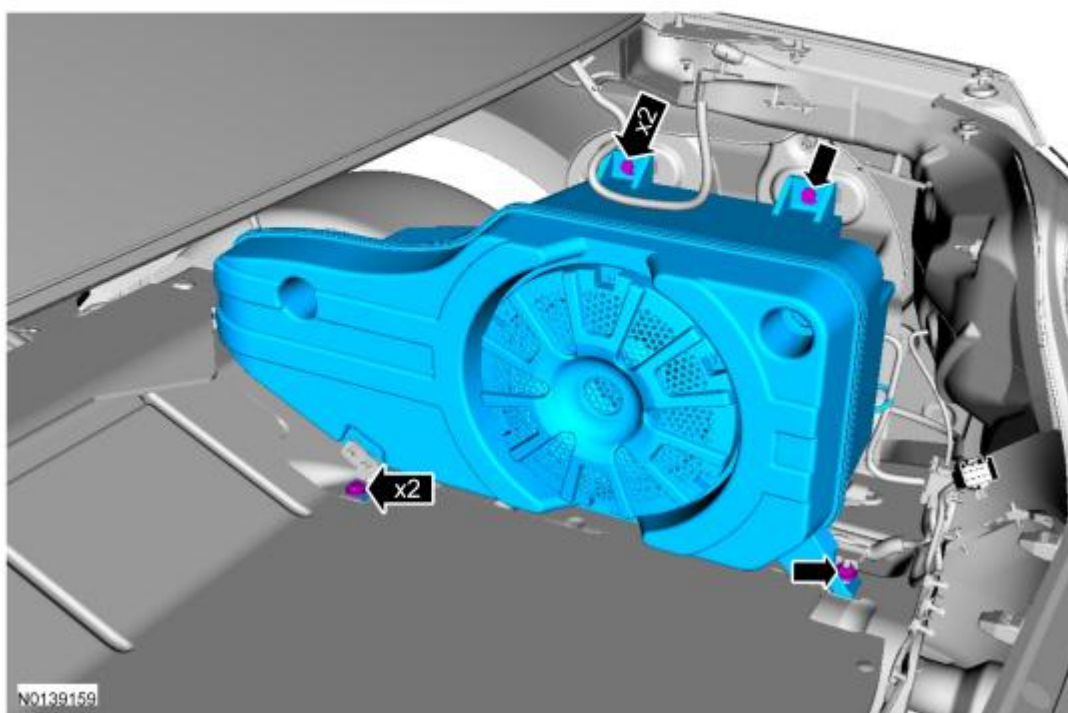
Speaker Enclosure

Removal and Installation

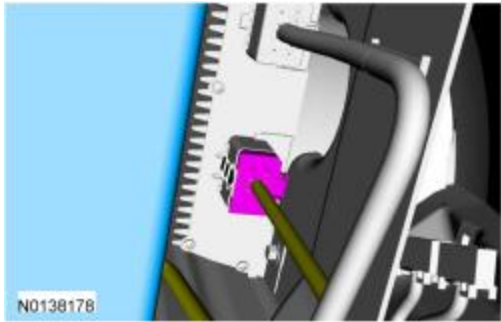
1. Position the trunk floor mat aside.



2. Remove the 2 speaker enclosure bolts, the 2 speaker enclosure nuts and remove the speaker enclosure.
 - To install, tighten to 11 Nm (97 lb-in).

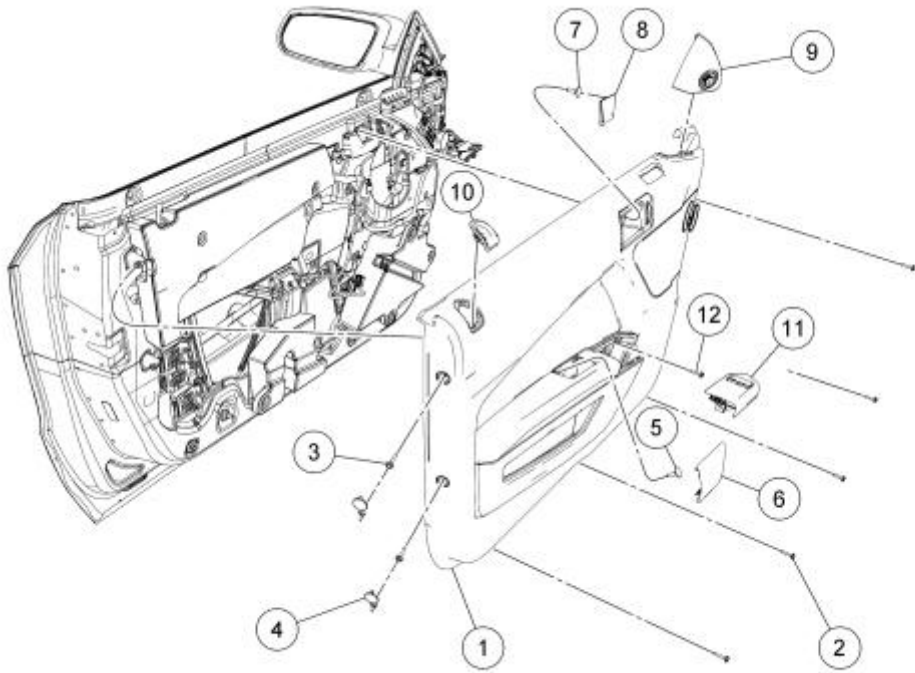


3. Disconnect the speaker enclosure electrical connector.



4. To install, reverse the removal procedure.

Door Trim Panel



N0100479

Item	Part Number	Description
1	23903 LH/ 23902 RH	Door trim panel
2	W714101	Door trim panel screw (5 required)
3	W714101	Door trim panel screw (2 required)
4	63219B	Door trim panel screw cap
5	N805651	Door trim panel bolt
6	6224057	Door trim panel handle cover
7	N805651	Door trim panel bolt
8	6322621	Interior door handle escutcheon
9	17D699 LH/ 17D698 RH	Sail panel
10	W709996	Door trim panel screw (8 required)
11	14A564	Window control switch
12	W714101	Door trim panel screw

Removal and Installation

1. Remove the sail panel.
 - If equipped, disconnect the exterior mirror control switch electrical connector.
 2. Remove the interior door handle escutcheon and the door trim panel bolt.
 3. Remove the door trim panel handle cover and the door trim panel bolt.
 4. Remove the window control switch and disconnect the electrical connector.
 5. Remove the 8 door trim panel screws and remove the door trim panel.
 - Disconnect the interior door handle actuating cable.
 - Disconnect the power door lock.
 - If equipped, disconnect the subwoofer electrical connector.
 - If equipped, disconnect the ambient light electrical connector.
 6. To install, reverse the removal procedure.
-

Parcel Shelf

Removal and Installation

1. Remove the quarter window trim panel. For additional information, refer to Quarter Window Trim Panel in this section.
 2. Release and fold the rear seat back to the forward position.
 3. Remove the 4 parcel shelf pin-type retainers.
 4. Position the 2 rear seat belts aside and remove the parcel shelf.
 5. To install, reverse the removal procedure.
-

Quarter Window Trim Panel

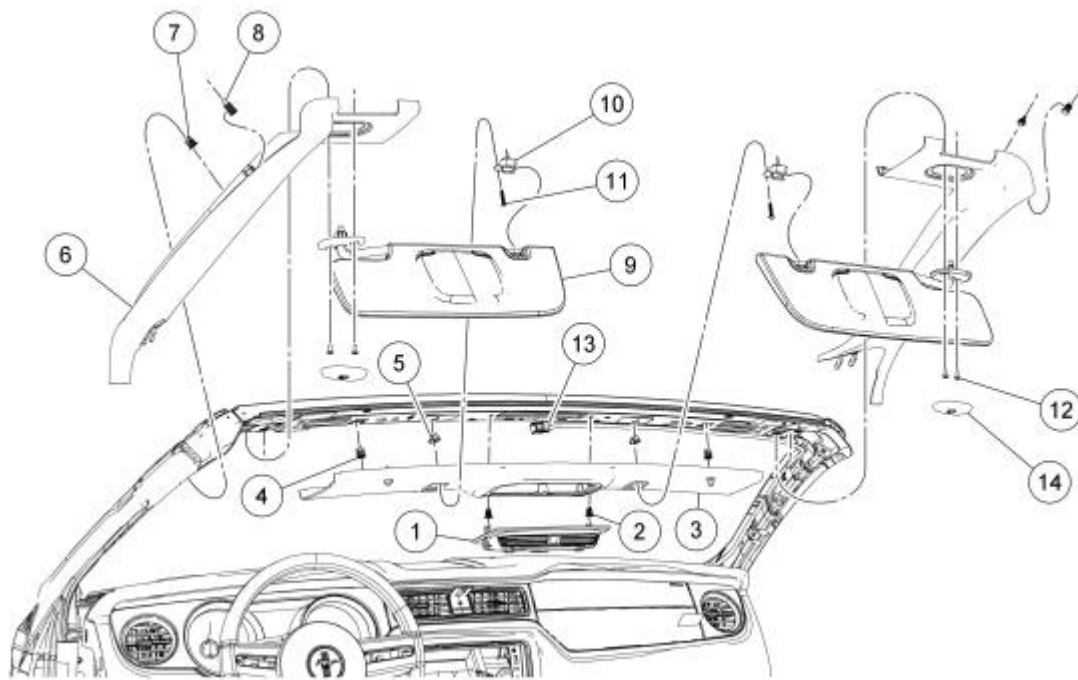
Removal and Installation

1. **NOTE:** On the coupe, install the front locating hook, then snap the A-pillar trim panel in place, working rearward.

Remove the 2 A-pillar trim panels. For additional information, refer to A-Pillar Trim Panel in this section.
 2. Remove the rear quarter trim panel. For additional information, refer to Quarter Trim Panel — Coupe in this section.
 3. Open the garment hook cover. Remove the bolt and garment hook.
 4. Remove the upper front safety belt anchor bolt cover and bolt.
 - To install, tighten to 48 Nm (35 lb-ft).
 5. Remove the quarter window trim panel, by pulling outward.
 6. To install, reverse the removal procedure.
-

A-Pillar Trim Panel

NOTE: Convertible shown, coupe similar.



N0114721

Item	Part Number	Description
1	6351A58	Overhead console
2	W704021	Overhead console retainer (2 required)
3	760387	Header trim panel
4	W704021	Header trim panel retainer (2 required)
5	1704100	Sun visor clip insert (2 required)
6	7603599 LH/ 7603598 RH	A-pillar trim panel
7	W704021	A-pillar trim panel retaining clip
8	7603598	A-pillar trim panel pushpin
9	6304105 LH/ 6304104 RH	Sun visor
10	6304132	Sun visor clip
11	—	Sun visor clip screw (2 required) (part of 6304132)
12	—	Sun visor screw (4 required) (part of 6304105 LH/6304104 RH)
13	14334	Overhead console wiring harness
14	76046B96	Sun visor bracket cover (2 required)

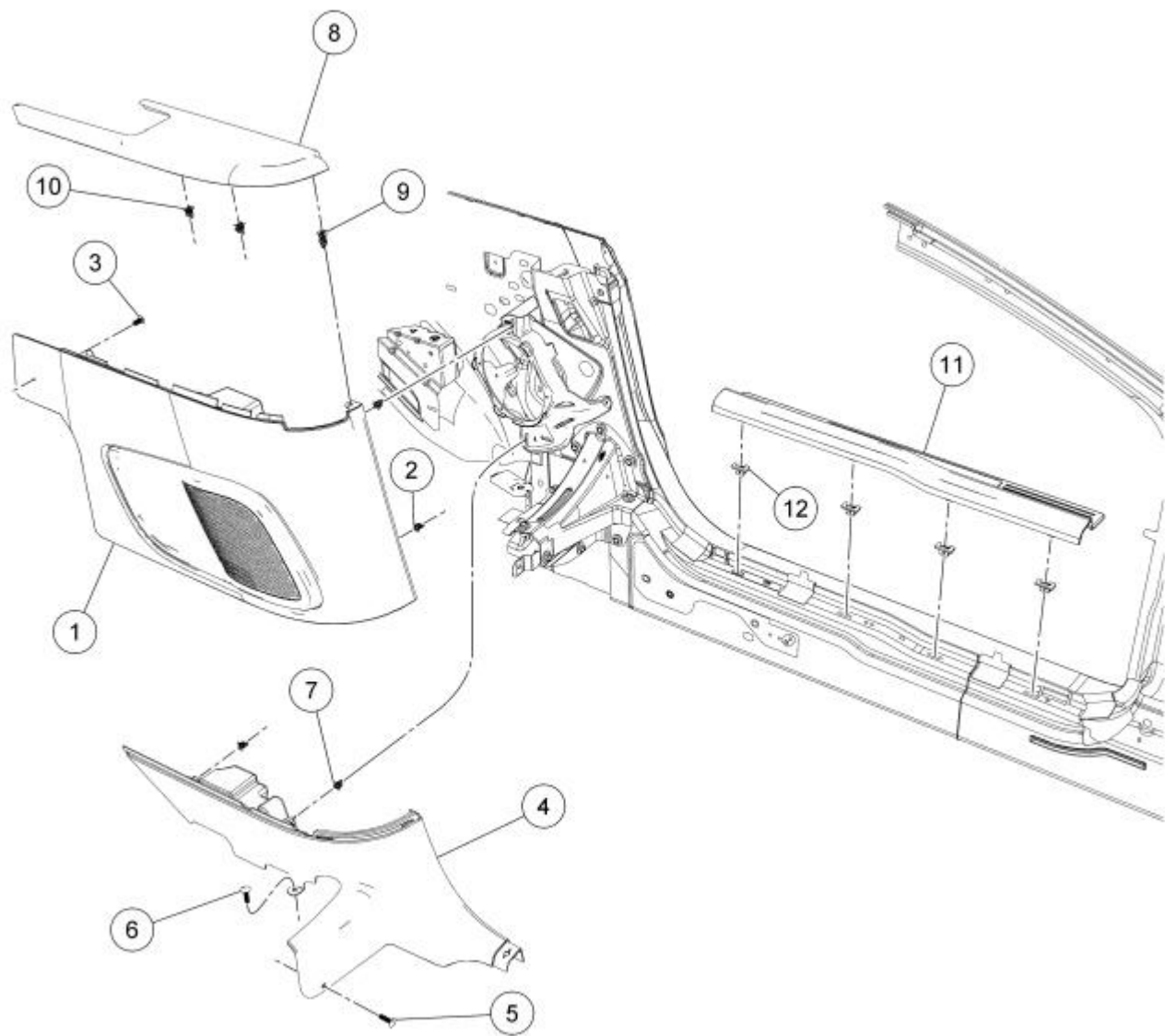
Removal and Installation

1. Remove the sun visor bracket cover.
2. Remove the 2 sun visor screws and set the sun visor aside.
3. Pull outward on the A-pillar trim to release the retaining clip and the pushpin from the body.
4. Pull slightly down and straight back on the A-pillar to unhook the front lower portions of the A-pillar trim panel.

5. **NOTE:** To avoid any damage to the A-pillar trim panel, remove any clips from the body and attach them to the A-pillar trim panel.

To install, reverse the removal procedure.

Quarter Trim Panel — Convertible



N0096680

Item	Part Number	Description
1	31113 LH/ 31112 RH	Upper quarter trim panel
2	—	Upper quarter trim panel retainer (2 required) (part of 31113 LH/ 31112 RH)
3	N807154	Upper quarter trim panel pushpin
4	31013 LH/ 31012 RH	Lower quarter trim panel
5	W709002	Lower quarter trim panel pushpin
6	W706544	Lower quarter trim panel pushpin

7	—	Lower quarter trim panel retainer (2 required) (part of 31013 LH/ 31012 RH)
8	13209 LH/ 13208 RH	Upper quarter trim panel cap
9	W713508	Upper quarter trim panel cap 2-stage retainer
10	—	Upper quarter trim panel cap retainer (2 required) (part of 13209 LH/ 13208 RH)
11	13201 LH/ 13200 RH	Door scuff trim plate
12	—	Door scuff trim plate clip (4 required) (part of 13201 LH/ 13200 RH)

Removal and Installation

1. Remove the door scuff plate. For additional information, refer to Scuff Plate Trim Panel in this section.
2. **NOTICE: To avoid damage to the upper quarter trim panel cap, remove any retaining clips from the body and attach them to the upper quarter trim panel cap before installing.**

NOTE: Remove and discard the upper quarter trim panel cap 2-stage high-retention retaining clip.

Remove the upper quarter trim panel cap by lifting upward to release the first stage of the upper quarter trim panel cap 2-stage high retention retaining clip and the secondary retaining clip. Using suitable pliers, release the second stage of the 2-stage high-retention retaining clip and remove the upper quarter trim panel cap.

3. Remove the rear seat cushion. For additional information, refer to Section 501-10.
4. **NOTICE: To avoid damage to the quarter trim panel, remove any retaining clips from the body and attach them to the quarter trim panel.**

NOTE: This procedure must be performed with the roof up, in order to access the rear pushpins.

Remove the upper quarter trim panel, pushpin retainer and quarter trim panel.

5. **NOTICE: To avoid damage to the quarter trim panel, remove any retaining clips from the body and attach them to the quarter trim panel.**

Remove the 2 pushpin retainers and the lower quarter trim panel.

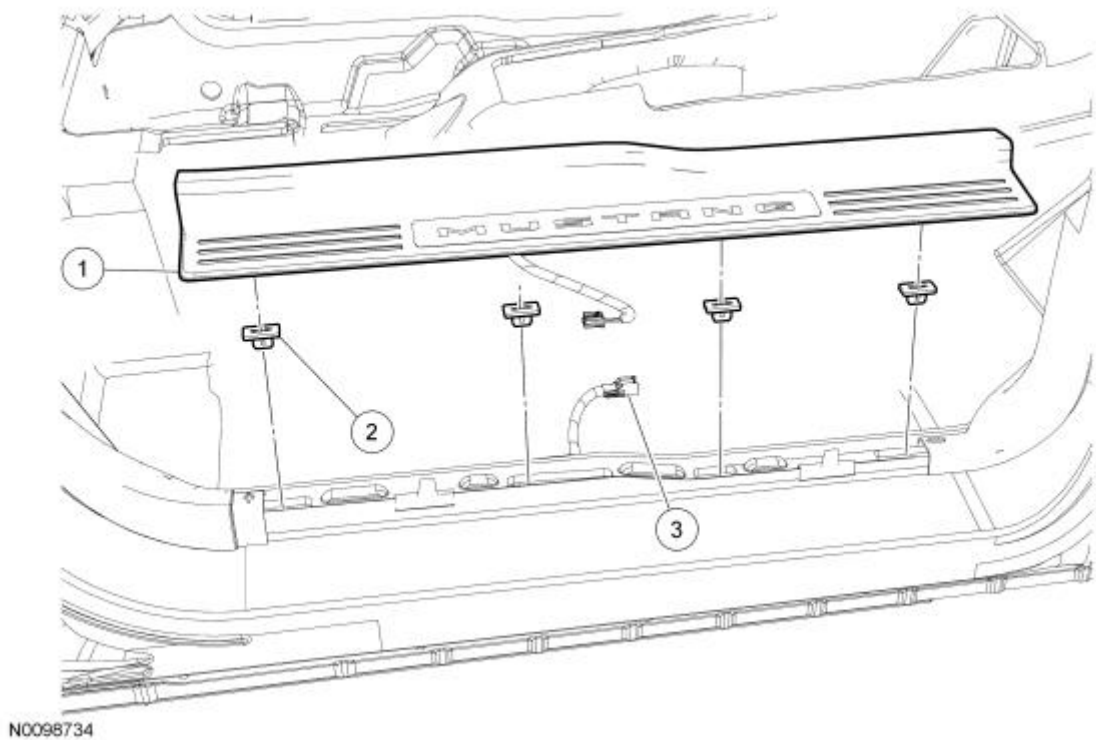
6. To install, reverse the removal procedure.
 - Install a new upper quarter trim panel cap 2-stage high-retention retaining clip.

Quarter Trim Panel — Coupe

Removal and Installation

1. Remove the door scuff plate. For additional information, refer to Scuff Plate Trim Panel in this section.
2. Remove the quarter trim panel lower pin-type retainer.
3. Release and fold the rear seat forward, remove the 2 pushpin retainers and the rear quarter trim panel.
4. To install, reverse the removal procedure.

Scuff Plate Trim Panel



N0098734

Item	Part Number	Description
1	6313209 LH/ 6313209 RH	Scuff plate trim panel
2	—	Scuff plate trim panel retaining clips (4 required) (part of 6313209 LH/ 6313209 RH)
3	14A005	Scuff plate trim panel electrical connector

1. **NOTICE:** To avoid damage to the scuff plate trim panel, remove any retaining clips from the body and attach them to the scuff plate trim panel before installing.

Remove the front door scuff plate trim panel by lifting straight up on the front and rear edge of the scuff plate trim panel to release the 4 lower retaining clips.

2. Disconnect the door scuff plate trim panel electrical connector.
3. Remove the door scuff plate trim panel.
4. To install, reverse the removal procedure.
-